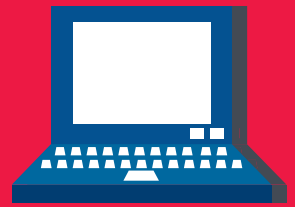
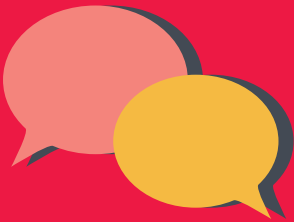


Ask Think Research



Your Insider's Guide to
Choosing a Private School

Start Here!

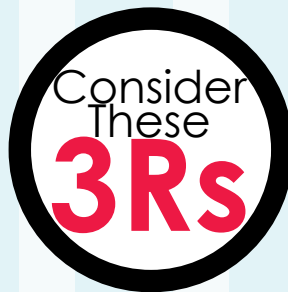
Considering whether private education is right for you? Think through your decision carefully as picking the right educational pathway will have significant impact on your future.

Reasons

Are you making the right choices based on your reasons?

Better prospects? Will your qualifications be recognised by the industry?

Job promotion? Will your qualifications have a positive effect on your career progression or provide you with the necessary skills to succeed in your job?



Risks

What are you in for?

Will there be changes in your personal or work commitments that may affect your studies?

Do you know that private schools are commercial businesses and can close down or relocate?



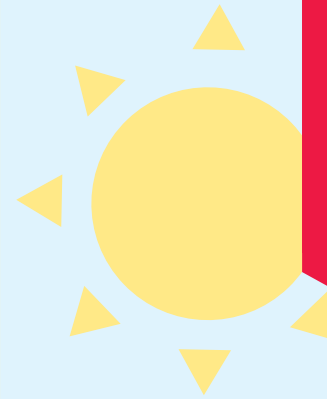
Readiness

How ready are you?

Are you prepared to cope with the academic rigour?

Can you attend classes regularly and meet assignment deadlines?

Can you cope financially?

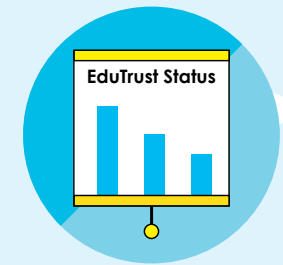


8 Things You Should Know Before You Enrol In A Private School



School Registration

Ensure the school is registered with CPE. Review the school's registration period, expiry date and its overall registration track record.



Quality Assurance

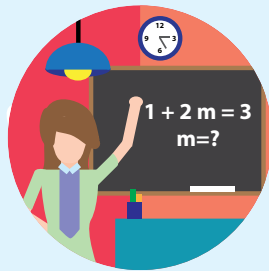
Is the school EduTrust-certified? EduTrust provides an assurance of quality. Bear in mind that EduTrust certification is voluntary.

Check the school's registration and EduTrust certification records at www.cpe.gov.sg.



Fee Protection

Ask if there is any course fee protection so that you will be able to recover unconsumed course fees should the school close down.



Teachers

Check if the teachers are qualified to teach the course.



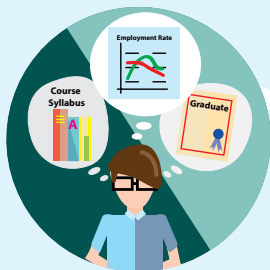
Partner Institution

Research on the partner institution conferring the diploma or degree, and whether the qualification is recognised by the industry.



School Premises

Head down to the campus ground to check the facilities and support services. Observe the study environment too.



Beyond Course Fees

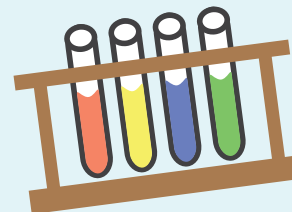
Find out about the course syllabus and materials, graduation rates and employment prospects. Approach the alumni to find out what they think of the school.



Internship

If industry attachment is included, find out which organisation you will be attached to, the period of attachment and the alternative arrangement should the attachment become unavailable. Verify the information with the organisation as well.

Do You Know?



All private schools and their students must sign a **student contract** for any course that is longer than two months. Understand the student contract fully before signing, as it will be legally-binding.

There is no Government agency in Singapore that accords **recognition** to certificates and qualifications. The decision to accept your qualification lies with prospective employers and higher educational institutions.



Only EduTrust-certified schools are allowed to take in international students on **Student's Pass**.



Generally, **Central Provident Fund (CPF) Education Scheme** is only applicable to courses offered in public schools.





Know more about private education

www.cpe.gov.sg

Committee for
Private Education
SINGAPORE



The Committee for Private Education (CPE) was appointed by SkillsFuture Singapore (SSG) Board in October 2016 to carry out its functions and powers relating to private education under the Private Education Act. The CPE is supported by a team of dedicated staff from SSG to regulate the sector, provide student services, consumer education and facilitate capability development.

CPE Student Services Centre

1 Marina Boulevard, #18-01

One Marina Boulevard

Singapore 018989

Tel: 6512 1140

E-mail: CPE_CONTACT@cpe.gov.sg

Information is accurate as of November 2015